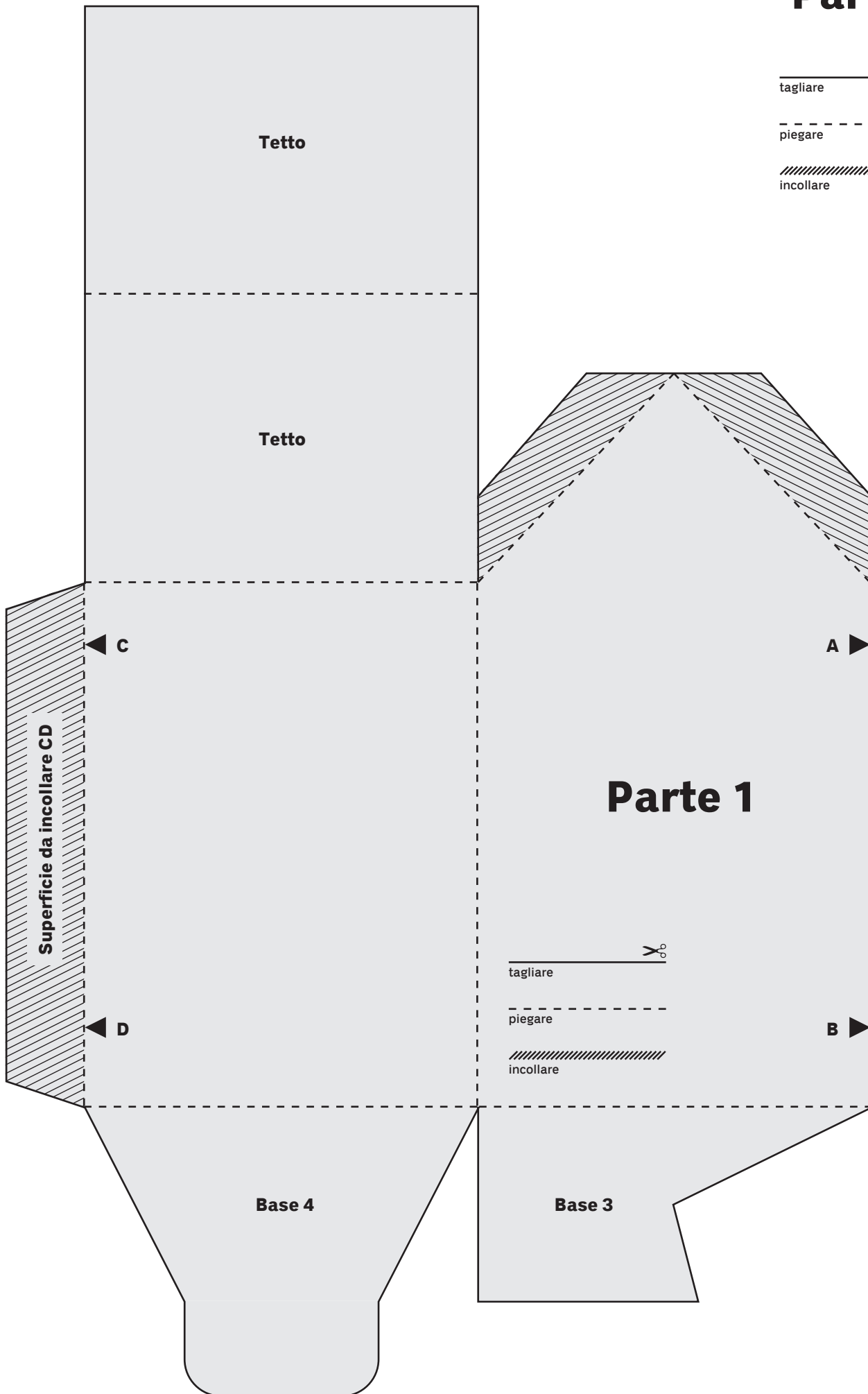

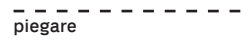


Parte 1

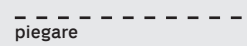


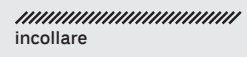
tagliare 

piegare 

incollare 

tagliare 

piegare 

incollare 

Superficie da incollare CD

Tetto

Tetto

Parte 1

Base 4

Base 3


C

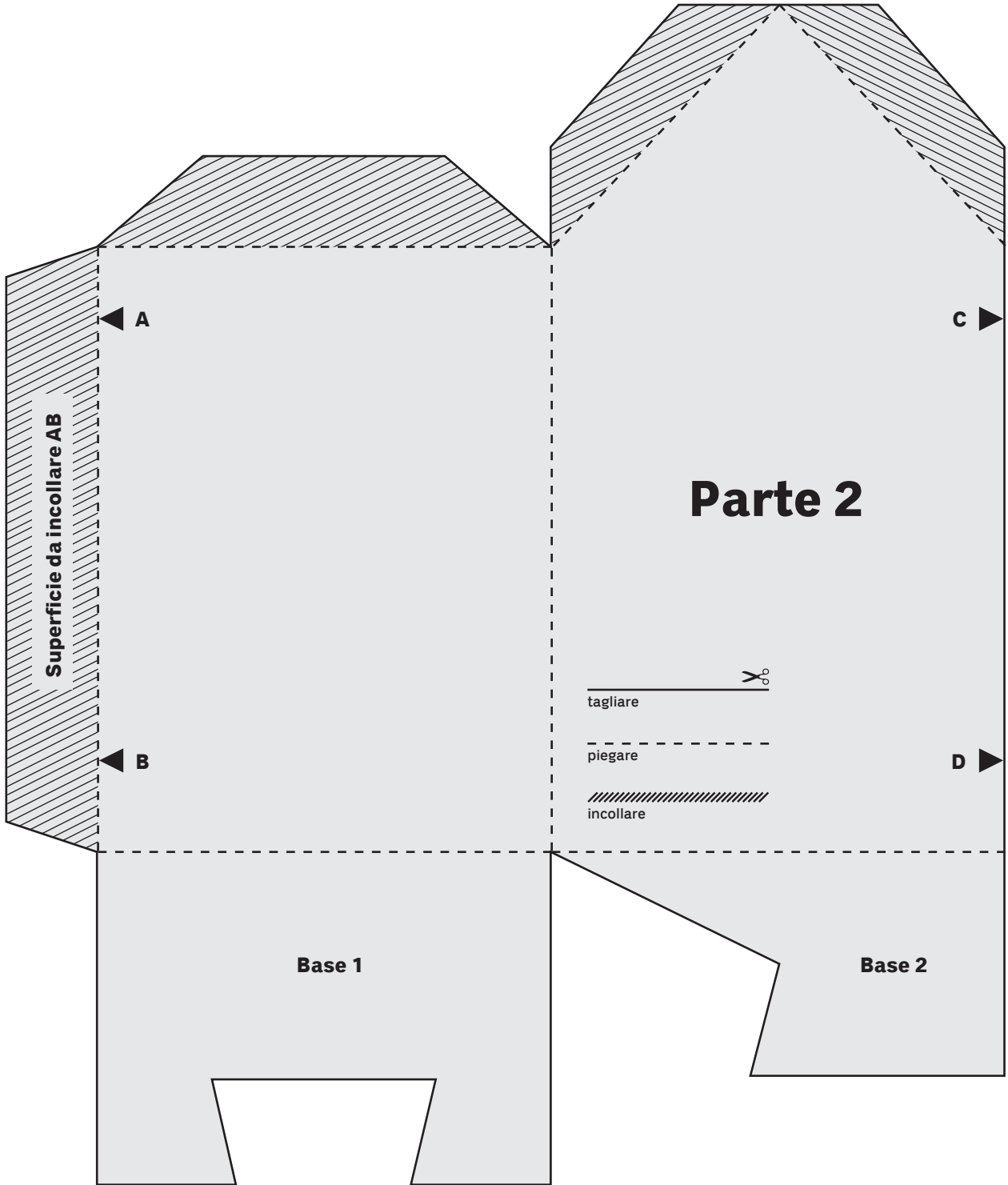
D

A

B

Parte 2

- tagliare 
- - - piegare
- ////// incollare



Decorazione

_____ ✂
tagliare

- - - - -
piegare

